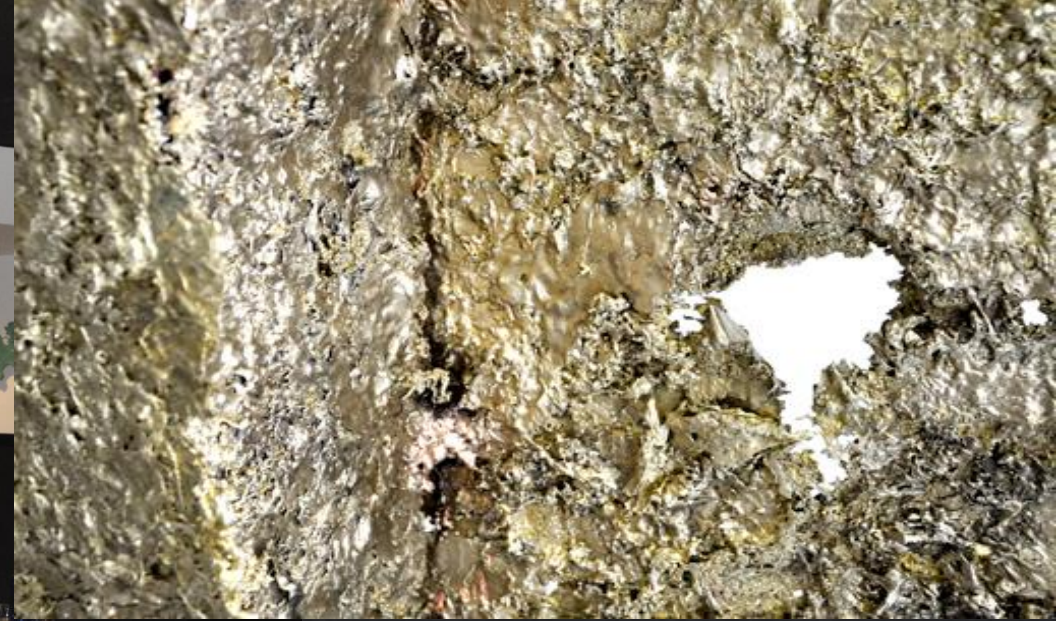




architectonic
BRONZE

SETTLED DESIGNS



Architectonic Bronze has made a unique sculptural piece designed by the Architecture Studio A-cero, directed by Joaquín Torres and Rafael Llamazares (Madrid, Spain)

Screen of six trapezoidal panels in
Architectonic Bronze on a steel base

More Information in www.architectonicbronze.com





**Three-dimensional
surface (35 m²) in
Architectonic Bronze,
defined like a truncated
inverted pyramid-
shaped at Neuroscience
and Health Sciences
Building at University of
Almería**



Sculptural element combined with corten steel at the Scientific- Technical Building at University of Almería





Sculptural element Pyramid shaped (45 m2) in the Auditorium at Pythagoras Scientific and Technical Park Headquarters





AB
architectonic
BRONZE

More Information in www.architectonicbronze.com



